

AMENITY HOUSING



Robertson Court, Armadale,
EH48 3LS

ABOUT ROBERTSON COURT

Robertson Court is a purpose built amenity development in the Bathville area of Armadale. It is only half a mile from the town centre where shops, pharmacies, banks and other facilities are available. There are also local bus services available nearby.

The development consists of 22 flats, including 18 one-bedroom and 4 two-bedroom properties. The properties are arranged over two floors in blocks of four. There is no lift.

What is amenity housing?

Amenity housing is for more active older people and anyone who is 60 or over may apply.

Alarm system

All properties are fitted with a community alarm system, which allows residents to summon help in an emergency.

Every property benefits from full double glazing.

In addition, every property features electric, white meter, central heating with a heater in each room.

Hot water is provided by an electric immersion system, there are facilities to cook by electricity in each kitchen.

Residents must supply their own cookers, which must be installed by a qualified electrician.



ABOUT ROBERTSON COURT

TV Aerial

A communal aerial is provided, with a socket in every living room, therefore an individual aerial is not necessary.

Gardens

The Association maintains, through the Service Charge, all the grassed and planted areas in the development. However, should anyone wish to have a small plot for gardening it may be possible to arrange this.

Car Park

A car park is provided for the use of residents and visitors to the development. It is not possible to allocate car parking spaces to individual residents.

Can I bring a pet?

Pets are welcome but we must know if residents are planning to keep them. If residents have a dog they must exercise them outside the development's grounds.

Council tax

You are responsible for paying council tax directly to the local authority.

Maintenance of your property

As the landlord of the development, we're responsible for carrying out certain repairs to make sure your property and the communal areas are well maintained and that certain things are safe.

You can find more information on this in the Scottish Secure Tenancy Agreement which you sign when you become a tenant.

We'll ensure your property is in good condition when you move in and we expect you to maintain the internal decoration.

ABOUT ROBERTSON COURT

Housing Officers

Each development has a dedicated Housing Officer who acts as the main contact between the development and Hanover's offices. They will regularly visit and meet with residents to discuss any housing or personal issues you may have.

They're more than happy to meet residents as a group or to make appointments to meet you individually in the comfort of your own home.

Tenants' Contents Insurance

We provide contents' insurance from as little as £1.50 a month. Or, if you prefer, you can arrange for your own cover; but you must let us know if you want to do this. Get in touch with us to find out more.

Annual Development Meeting

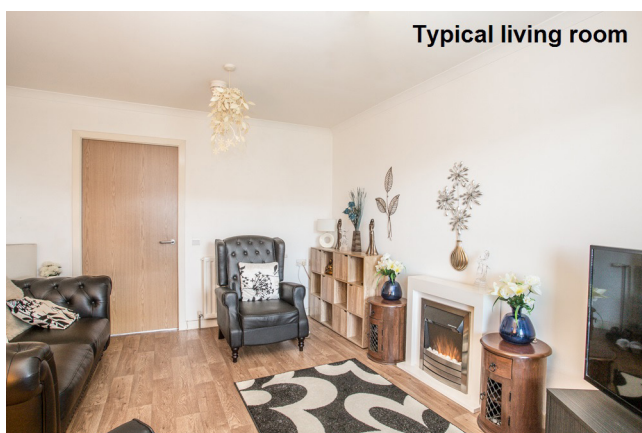
Each year, we invite every resident to come to an Annual Development Meeting, usually held in the lounge of a neighbouring development.

They usually take place in the autumn and it's a good opportunity for residents to discuss issues relating to the development.

Communications and consultations

We're committed to effective communication with residents.

We promise to communicate and consult in a variety of ways, including writing, visiting residents to discuss matters or calling extra development meetings.



To find out more about Robertson Court - or to apply for a property - call **0131 557 7404** or email **eastinfo@hanover.scot**.

Alternatively, apply online at **www.homeforyou.org.uk**

Or visit our website, **www.hanover.scot** for more details.