



Sheltered & Very Sheltered Housing

McAlpine Court, Wishaw,
11 McAlpine Street, ML2 8AH



About McAlpine Court

McAlpine Court is a mixed housing development offering both sheltered and very sheltered accommodation, situated in Wishaw town centre, North Lanarkshire. A range of quality amenities are within walking distance, including a supermarket and a train station with regular services to Lanark and Glasgow.

What is very sheltered housing?

Very sheltered housing is aimed at frailer older people. Residents have their own flat and can live as independently as they please, but support staff are on site 24-hours a day and quality, nutritious meals are provided.

What is sheltered housing?

Sheltered housing is aimed at the over 60s. It offers independent living, with the reassurance of additional support from on-site staff, as required. Meals and heating costs are not included in sheltered rental charges.

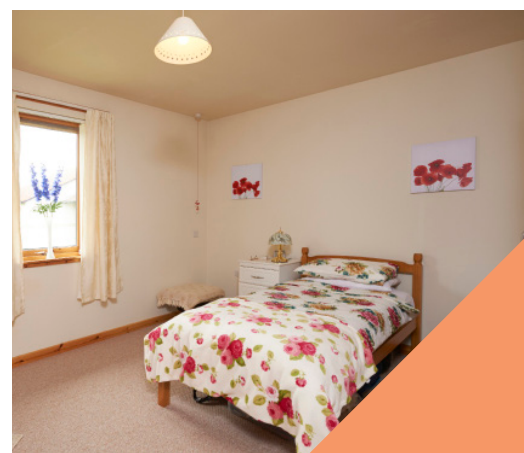
Our properties

McAlpine Court features 4 one-bedroom sheltered flats and 12 very sheltered studio flats, both with access to the communal lounge. All properties offer shower rooms or wet rooms and a kitchenette. There are staff onsite at all times for the benefit of all residents.

All rooms are heated by electric storage heaters and hot water is provided by small electric boilers within each flat. Energy charges are included in the rental costs for very sheltered residents only. Sheltered residents must make arrangements with an energy supplier directly.

For added security and peace of mind, both very sheltered and sheltered properties are connected to a 24-hour community alarm, which allows residents to summon help in an emergency.

In sheltered flats only - each property has its own front door and there is space in the kitchen to install an electric cooker. Residents must supply their own cookers and have them installed by an authorised trades person.



Very Sheltered Catering

For Very Sheltered Residents, we provide two cooked meals a day - typically a three-course meal at lunch time and a high tea in the evening.



Meals are prepared by our on site staff and served in our attractive communal dining room. We offer a varied menu taking into consideration personal choice, seasonally available fresh produce and all dietary requirements. All catering costs are included in the monthly charges.

Communal facilities

McAlpine Court features a high quality, fully furnished communal lounge and kitchen. Residents are free to use these as they please.

Residents are also free to invite friends and neighbours to join them here. A car park is available for residents and visitors, however spaces are limited so it is not possible to allocate them to individual properties.

Hanover may sometimes need to use the lounge for meetings and the room may also be used by outside groups, in which case a

charge will be levied to the group using it.

A private laundry for residents' own use, or by care at home staff on their behalf, is also provided. It has automatic washing machines and tumble driers.

Hanover maintains the development gardens. However, should anyone wish to have a small plot for gardening it may be possible to arrange this.

A communal aerial is provided, with a socket in every living room, therefore an individual aerial is not necessary.

Guest bedroom

McAlpine Court features a well equipped guest bedroom for visiting friends or relatives. For a small fee to cover costs the bedroom can be booked up to two months in advance. Priority bookings are given to relatives of a resident who is ill.



Maintenance

As the landlord of the development, we're responsible for carrying out repairs to make sure your property and the communal areas are well maintained and safe.

You can find more information on this in the Scottish Secure Tenancy Agreement which you sign when you become a tenant. We'll ensure your property is in good condition when you move in and we expect you to maintain the internal decoration.

Pets

Pets are welcome but we must know if residents are planning to keep them.

If residents have a dog they must exercise them outside the development's grounds.

Tenants' Contents Insurance

We provide contents' insurance from as little as £1.00 a month. Or you can arrange for your own cover; but residents must let us know.

What staff work at McAlpine Court?

At McAlpine Court, a Very Sheltered Manager manages the overall development and the staff who work there.

Very Sheltered residents also have a Support Worker who helps them be as active or independent as they want, liaises with relatives and organisations like community health services and social work departments, and looks after any related administration.

Staff are on-site 24hrs, however Telecare staff take calls between 10pm and 8am and will notify on-site staff to assess the situation, if required.

Council tax

All residents are responsible for paying council tax directly to the local authority.

Annual Development Meeting

Each year, we invite every resident to come to an Annual Development Meeting, usually held in the lounge or somewhere nearby.

They usually take place in the autumn and it's a good opportunity for residents to discuss issues relating to the development.

Communications and consultations

We're committed to effective communication with residents.

We promise to communicate and consult in a variety of ways, including writing, visiting residents to discuss matters or calling extra development meetings.

To find out more about McAlpine Court or to apply for a property, call 0800 111 4646 or email westinfo@hanover.scot

