

Covid-19 testing programme - flow chart

18 February 2021

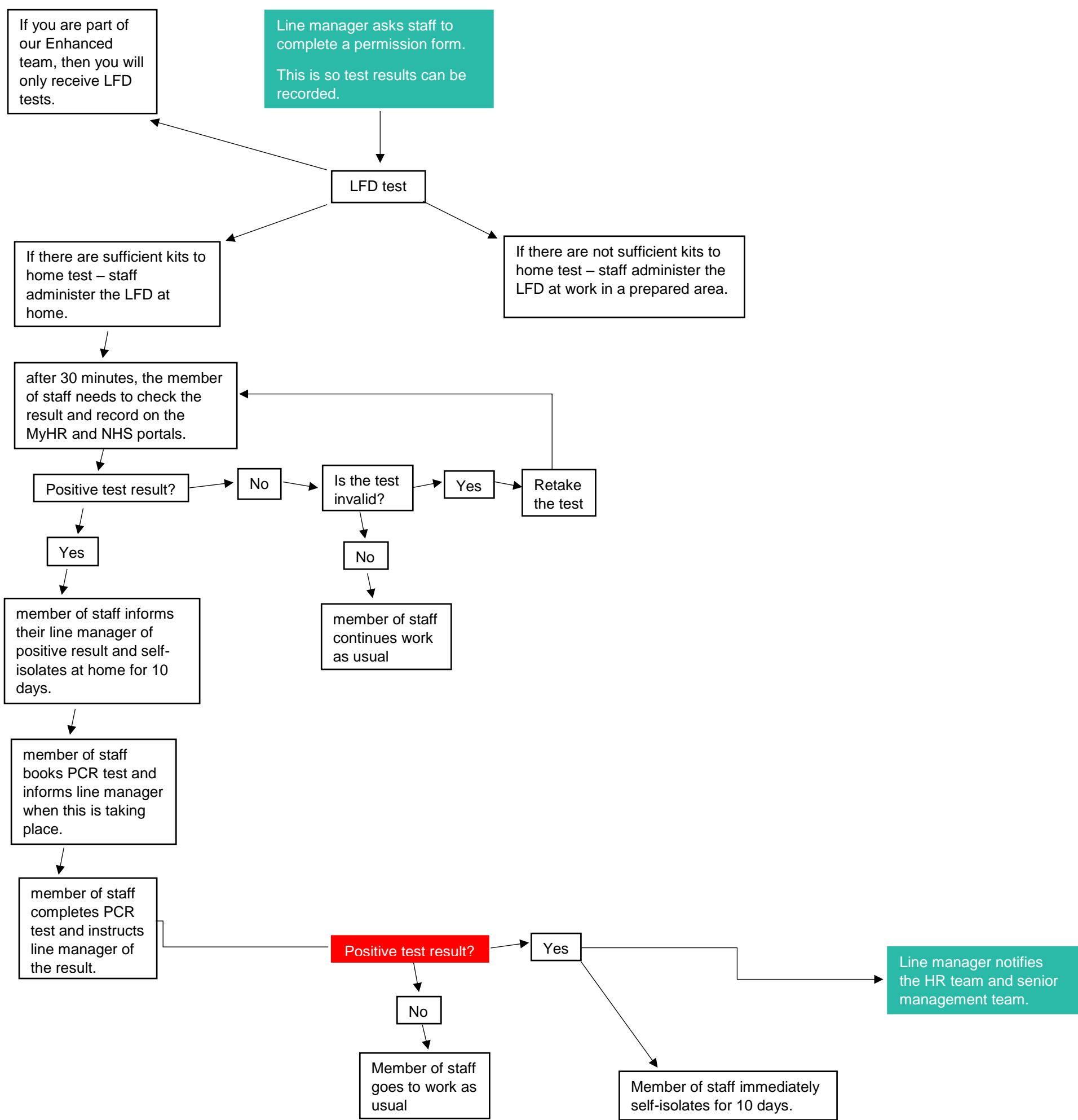
Version 1.5

From 22 February 2021, housing with care, enhanced and factoring staff will be expected to submit either:

- Two Lateral Flow Device (LFD) tests per week; or
- One Polymerase Chain Reaction (PCR) test per week.

The type of test you use will depend on supplies from your local authority or health board.

**Taking the test at home.** (Any points in green are for Line Managers to complete.)



Taking the test at work. (Any points in green are for Line Managers to complete.)

